



STATE OF NEW JERSEY

# SCHOOLS DEVELOPMENT AUTHORITY

Building Schools, Building Communities, Building Opportunities



## MESSAGE FROM CEO CHARLES B. MCKENNA

It's summer and that means good weather, increased construction output and interns. The SDA has three energetic rising seniors from Trenton Central High School (TCHS) working with us this summer. This is our third intern class and having them energizes staff and provides a real window into our true constituents – the students of New Jersey.

Summer for us is always a busy time as construction gets into high gear and we face September deadlines for school openings. We are making real progress and gaining some accolades while we do it. Recently the Trenton Central High School project was recognized by the New Jersey Alliance for Action as a New Jersey Leading Infrastructure Project and SDA received a Good Neighbor Award for the Phillipsburg High School Project. These awards are indicative of the types of work and the impact we are making.

This is not your father's SDA. We recently looked at our projects to quantify our progress in controlling costs and maintaining deadlines. For 12 projects recently completed, all came in on or under budget and all but one of the projects was delivered on or before schedule. Change orders for the design-build projects completed averaged 0.5 percent of project costs. Therefore, we are building faster, better and more cost effectively. This only happens because of the great and hard work of the SDA staff.

Our SWMBE program is growing and providing great instruction to those small businesses seeking to grow and enter into the world of government contracting which can be a cumbersome process for the uninitiated. While we build schools to educate our young, we train the companies that will eventually be part of that construction process. Thus, we come full circle.

As the summer comes to an end, we look forward to opening new schools and breaking ground on more projects to provide a new beginning for more of New Jersey's children.



## SDA CONSTRUCTION MILESTONES



*New Brunswick Paul Robeson Community Theme  
School for the Arts Beam Signing*



*Vineland Lincoln Avenue Middle  
School  
Groundbreaking*



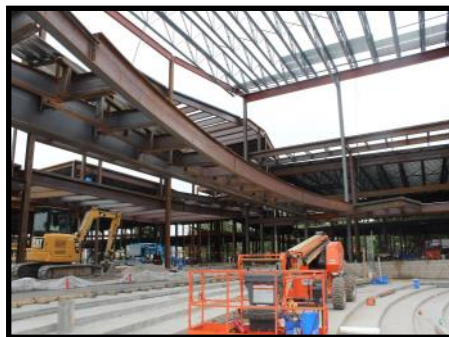
*Passaic Leonard Place Elementary School  
Beam Signing*

As new projects continue to advance, SDA highlighted ongoing construction progress with celebratory events. In February, a beam signing ceremony was held for the addition at the Paul Robeson Community Theme School for the Arts in New Brunswick. In May, SDA held a groundbreaking ceremony for the new Lincoln Avenue Middle School in Vineland and a beam signing ceremony for the new Leonard Place Elementary School in Passaic.

## PROJECT RECEIVES AWARD

Construction of the new Trenton Central High School is moving quickly with structural steel installation now complete and building enclosure underway. The project was recently recognized by the New Jersey Alliance for Action as a “New Jersey Leading Infrastructure Project”.

The award recognizes “innovative, pioneering and landmark construction initiatives that greatly impact the state’s economy and honors the businesses and organizations that work together as partners to ensure the project’s success.”



STATE OF NEW JERSEY

**SCHOOLS DEVELOPMENT AUTHORITY**

## SMWBE CONTRACTOR TRAINING PROGRAM

In May, the SDA held a graduation/networking event, which concluded the 2017 SMWBE Contractor Training Program.

The event recognized the 42 participants who successfully completed the program. It also provided an opportunity for all involved with the program to network with each other as well as with representatives from established and successful contracting firms.

The SMWBE Contractor Training Program consisted of nine weeks of courses that offered participants information regarding how to grow their businesses and work with the SDA.



*Graduates from the Newark Location*



*Graduates from the Trenton location*

## DESIGN-BUILD APPROACH SHOWS BENEFITS TO BUDGET AND SCHEDULE

At the March 2017 Meeting, SDA Board Members were provided with a presentation detailing the success of processes and approaches implemented under the Christie Administration. In all, 12 projects approved as part of the SDA Capital Portfolio were studied. All 12 projects were completed within or under budget. Eleven of the 12 projects were either delivered before or on the date originally projected, including four delivered ahead of schedule.

A significant benchmark examined was the total change orders experienced on the projects reviewed. The 12 projects evaluated experienced an average of 2.2 percent in change orders per project. This includes seven projects built using a design-build approach which experienced an average of only 0.5 percent in change orders per project. In comparison, 17 projects examined that were completed before 2010 experienced an average of nearly 12.2 percent in change orders.



STATE OF NEW JERSEY

**SCHOOLS DEVELOPMENT AUTHORITY**

## Recent Project Activity

Since February 2017, the SDA has advertised and/or awarded contracts for the following projects-

### Recent Advertisements:

Millville (Cumberland County)- Millville senior High School (CM Services)

Passaic (Passaic County) – New Dayton Avenue Educational Campus (Design–Build Services)

Camden (Camden County) – New Camden High School (Abatement-Demo Services)

### Recent Contract Awards:

East Orange (Essex County)- George Washington Carver Elementary School (Design-Build Services)

Harrison (Hudson County) – Harrison New Elementary School (CM Services)

Irvington (Essex County) – Madison Avenue Elementary School (CM Services)

Millville (Cumberland County)- Millville senior High School (Design-Build Services)

Paterson (Passaic County) – Union Avenue Middle School (Early Site/Demolition Services)

Pemberton (Burlington County) – Denbo-Crichton Elementary School (Abatement/Demolition Services)

To view upcoming opportunities, please view the [SDA's 2017 Project Forecast](#) on the SDA website.

## SDA CAPITAL PORTFOLIO



There has been significant activity on the projects approved as part of the SDA's Capital portfolio. The status of the portfolio as of June 1, 2017 is:

- 13** projects are complete;
- 11** projects are in active building construction;
- 2** projects have initiated design-build activity;
- 2** projects are in design-build procurement;
- 9** projects are in design development;
- 1** project is in the pre-design services phase; and
- 2** projects are in scope development.

For more information please visit our website at [www.njsda.gov](http://www.njsda.gov) or call 609.341.5900

To contact the SDA, please email the Authority at [CustomerService@njsda.gov](mailto:CustomerService@njsda.gov)